

**BridgePrep Academy  
of Palm Beach**

Parent/Student Handbook

2018 🐾 2019

Paul R. Sirota  
Principal



9085 Happy Hollow Road  
Delray Beach, FL 33446

## Parent/Student Handbook

[WWW.BRIDGEPREPPALMBEACH.COM](http://WWW.BRIDGEPREPPALMBEACH.COM)

### MISSION STATEMENT

BridgePrep Academy believes every child learns best in a safe, nurturing and stimulating environment where high academic expectations, self-esteem, good character, and an appreciation for the arts are promoted. BridgePrep Academy's mission is to provide a challenging academic curriculum that will encompass an enriched Spanish language program, technology and experiences that will enable students to develop in all areas. BridgePrep Academy's goal is to educate well-rounded individuals and enable students to reach their maximum potential.

### STUDENTS' CODE OF EXCELLENCE

🐾 Be honest 🐾 Be kind 🐾 Be respectful 🐾 Be patient 🐾 Be proud 🐾  
🐾 Be courteous 🐾 Be prompt 🐾 Be prepared 🐾 Be polite 🐾

**2018 - 2019  
BridgePrep Academy Charter School  
Governing Board**

**Yeneir Rodriguez-Padron, Chair**

**Luis Necuze, Treasurer**

**Mario Rubio, Secretary**

**Tom Sutterfield, Director**

**Lou LoFranco, Director**

**Conflict Resolution**

Paul R. Sirota



## Table of Contents

Letter from Principal .....	7	
Charter Schools .....	8	
Mission Statement .....	8	
Vision Statement.....	8	
Non-Discrimination Statement .....	8	
Curriculum.....	8	
Daily Procedures		
Arrival.....	9	
School Hours .....	9	
Arrival/Dismissal Procedures .....	9-10	
Rainy Day Dismissal.....	11	
Parking and Traffic Rules.....	11	
Safety Patrols .....		11
Attendance.....	12-13	
Birthdays .....	14	
Book bags .....	14	
Communication		
Parent to School.....	14	
Parent to Teacher .....	15	
School to Parent.....	15	
Emergencies		
Emergency Protocol.....	15	
Accidents/Illnesses.....	16-17	
Fire Drills .....	17	
Intruders.....	17	
Family Crisis.....	17	
Weather Emergencies.....	17	
National Emergency.....	17	

Emergency Contact Information.....	17
Internet Ethical Use	
Internet Access.....	17-18
Disciplinary Procedure .....	18
Family Rights and Privacy Rights.....	18
Grooming	
Make-up .....	18
Hair .....	18
Jewelry .....	19
Uniforms .....	19
Grades .....	20
Conduct.....	21
Code of Excellence .....	21
Student Code of Excellence .....	21
Student Conduct .....	21
Proper Language .....	21
Fighting.....	22
Harassment .....	22
Acts of Disorderly Conduct .....	22
Sanctions.....	22
Glossary.....	22
Classroom Consequences .....	23
Administrative Consequences .....	23
Severe Clause .....	23
Health Guidelines.....	25
Home Learning.....	26
Parents’ Responsibilities .....	26
Students’ Responsibilities .....	26
Go Green .....	27
Lost and Found.....	27
Lunch .....	27

Cafeteria Rules .....	27
Media Coverage .....	27
Medication .....	27
Procedures for Administering Medication .....	27
PAVE Hours .....	28
Personal Belongings .....	29
Physical Education .....	29
Prohibited Items in School .....	29
Security .....	30
Telephone Calls .....	30
Text Books .....	30
Transportation .....	30
Visitor Passes .....	31
Parent/Student Agreement of Compliance .....	32

## LETTER FROM THE PRINCIPAL

Dear BridgePrep family!

Welcome to another great year of learning! The start of a new school year is always a monumental moment with great anticipation and excitement. We know this is going to be a year of success, whether your child is new to school, making a change from another state, or simply returning after a fun-filled summer! I want to formally welcome you to our 2018-2019 school year.

**Please read below important information that may be of great assistance to you as we plan for the new school year:**

**Supplies:** You can find these on our website <http://www.bridgepreppalmbeach.com> under students and then supplies.

**Uniforms:** LOTS of Ibiley sales taking place so please visit the website and or call directly @ <http://www.ibiley.com/locations.aspx>. Remember, uniforms are MANDATORY, and Middle School LEAD Wednesday dress uniforms are also mandatory. Shirts MUST be tucked in, and if the bottoms have belt loops, belts MUST be worn. Khaki or Navy Blue bottoms only.

**Aftercare & Lunch Docs:** Can be picked up during Orientations and inside your child's First Day Packet.

**Our Children:** We will continue a computer-based blended course into our curriculum that will enhance your child's growth in reading, comprehension, fluency, writing, as well as computer skills with digital literacy. Additionally, our Spanish program for all K-8 will be based in literacy and will help each child be better prepared for the global economy.

**Our Staff:** We have grown and hired new teachers and staff to enhance our learning environment. You will see lots of favorite and familiar faces as well as new ones that are eager to be a part of our community

**Our Families:** It takes a village to create a rewarding and successful school year, and in BridgePrep fashion, we have many wonderful events you will not want to miss! PLEASE stay connected and check out our Website, Facebook, and Phone App daily. The yearly school calendar is available on both the website and phone App. We have 2 Facebook pages. Our schools page is @bridgeprepacademyofpalmbeach AND @BridgePrep Academy Palm Beach Bulldogs in Action.

I welcome emails, calls, and personal visits to address any questions and/or comments that may arise. I thank you, in advance, for your patience as my focus is on children's academic programs based on data collected. Therefore, my availability during student hours may be limited between 8:00am and 3:30pm; as I will be an active instructional leader focused on your child(ren), rigorous instruction, and consistent safe learning environment for all.

We will work together "as a family" to grow, expand, and sustain an innovative academic environment with your support.

Sincerely,  
Paul R. Sirota

Principal, BridgePrep Academy of Palm Beach

(561)406-0709

[psirota@bridgeprepacademy.com](mailto:psirota@bridgeprepacademy.com)

[www.bridgepreppalmbeach.com](http://www.bridgepreppalmbeach.com)



## CHARTER SCHOOLS

BridgePrep Academy Charter School is a non-profit self-managed entity that enrolls students residing in Palm Beach who qualify to attend a regular public or private school. Charter schools must be approved and monitored by the local school district; however; they are operated independently. In a charter school, the students are district students, meaning that our

students are Palm Beach County students. Charter schools are funded by state, local and federal monies.

## **MISSION STATEMENT**

BridgePrep Academy believes every child learns best in a safe, nurturing and stimulating environment where high academic expectations, self-esteem, good character, and an appreciation for the arts are promoted. BridgePrep Academy's mission is to provide a challenging academic curriculum that will encompass an enriched Spanish language program, technology and experiences that will enable students to develop in all areas. BridgePrep Academy's goal is to educate well rounded individuals and enable students to reach their maximum potential.

## **VISION STATEMENT**

BridgePrep Academy believes that each child is a unique individual who needs a secure, nurturing and stimulating environment in which to grow and mature emotionally, intellectually, physically and socially. BridgePrep believes in a student-centered educational philosophy that emphasizes hands on learning and students actively participating in learning. Students will be able to discover through hands on, engaging activities that will incorporate different approaches to accommodate each child's learning style and as a result, raise academic achievements.

## **NON-DISCRIMINATION STATEMENT**

BridgePrep Academy Charter School prohibits discrimination in employment, educational programs, and activities on the basis of race, national origin, color, creed, religion, sex, age, disability, sexual orientation, gender identity, or associational preference.

## **CURRICULUM**

BridgePrep Academy integrates Palm Beach County School District Competency Based Core Curriculum with the New Florida Standards. BridgePrep will be implementing the Florida Standards, adhering to the Palm Beach County School District implementation timeline. Our curriculum includes greater rigor in coursework and increased student performance expectation. Our curriculum is designed to meet the needs of each student through differentiated teaching. BridgePrep teaches a bilingual curriculum in which students will be taught how to read, write and speak Spanish. **All students are required to take Spanish as part of their daily curriculum.**

## **DAILY PROCEDURES**

### **ARRIVAL**



School starts promptly at **8:30 AM** and teachers will open their doors at **8:25 AM**. Children purchasing breakfast will be admitted into the building at **8:00 AM**. The general student body will be permitted into the building at **8:00 AM**. Please do not leave your child outside the building unattended before **8:00 AM**.

The entrance to the school is via Happy Hollow Road and the exit is located on Happy Hollow Road.

- If your child arrives at school after 8:25 AM, your child must go directly to his/her classroom.
- If your child arrives at school after 8:30 AM, your child must go directly to the main office and pick up a tardy pass. Teachers will not permit students into class without a tardy pass.

#### **PLEASE REFER TO OUR ATTENDANCE POLICIES FOR REQUIRED DOCUMENTATION**

**If your child is absent or tardy to school, your child will need a note explaining the absence or tardiness. If a child does not have a note he/she will be marked unexcused. You have three days to send in a note excusing your child’s absence or tardiness, after the five days the unexcused classification will remain.**

#### **SCHOOL HOURS**

<b>Grade Level</b>	<b>Day of the Week</b>	<b>Times</b>
Kindergarten and 1 <sup>st</sup> grade	Monday through Friday	8:30 AM – 2:30 PM
2 <sup>nd</sup> to 7 <sup>th</sup> grade	Monday, Tuesday, Thursday, Friday	8:30 AM – 3:30 PM
Kindergarten to 7 <sup>th</sup> grade	Wednesday	8:30 AM – 2:30 PM

#### **DISMISSAL**

1. Teachers and students must not leave the classroom before the “dismissal time” above.
2. Students are to be escorted by the teacher to the designated dismissal area to be picked up.
3. Teachers will remain with their students for 15 minutes after the child’s scheduled dismissal time. Students that have not been picked up 15 minutes after their dismissal time will be placed in the on-campus after school care program at **a fee charged to the parent.**

4. When students are dismissed, a student is expected to take with him/her all materials needed for homework including his/her agenda.
5. Students will not be permitted to go back into their classrooms after being dismissed from school. This policy also applies for students enrolled in the ASC program.
6. **Students will not be released from class 30 minutes prior to the end of their scheduled school day.**
7. Students will not be released to anyone under the age of 18 years old, or anyone that is not on the emergency contact card and approved by the parent or legal guardian.

### **ARRIVAL/DISMISSAL PROCEDURES**

When dropping off or picking-up your child; you have two options.

1. You may drive through the pick-up lane, stop momentarily at your child's designated pick-up area and allow staff to open your car door and help your child into the car. Please do not linger, but drive on, as there will be parents in other cars behind you attempting to drop off or pick up their child. If there is a long line of cars waiting to drop off or pick-up students, please be patient. **Under no circumstances will a student be released from the car pick up line to any person not in a vehicle in the car line.**
2. At no time is anyone to park and leave his or her car on the drop-off, pick-up lane. Parking a car in the drive through lane will obstruct the flow of traffic and create a potentially dangerous situation. Please understand that parking in unauthorized areas is considered a serious offense. It is strongly encouraged that purses, electronic devices, etc. be taken out of the vehicle when it will be unattended. The school or its employees are not held responsible for any stolen items left inside a vehicle.
3. Handicap spaces are to be reserved and utilized for handicapped drivers that currently have a decal indicating so. Unauthorized vehicles are not to park in those identified parking spaces.

### **DESIGNATED PICK-UP AREAS**

#### **Children assigned to the After School Care Program**

All students going to After-School Care will be escorted to the cafeteria to meet up with the After-Care staff upon dismissal. If you will need to pick students up early from after-care, you

must plan to pick up after 2:45 for K-1 and everyone on Wed. and after 3:45 for 2-7 every day except Wed. We cannot retrieve students from After Care until the dismissal process is over for the day.

### **Other Students**

Your child will be escorted by their teacher to the designated dismissal area to be picked up. Your child's class will line up and you may drive through the car line to pick-up your child. ALL STUDENTS NOT IN AFTER-CARE MUST BE PICKED UP IN A VEHICLE IN THE CAR LINE.

### **RAINY DAY DISMISSAL**

1. All Students will remain in their classrooms with their teachers. Parents must get out of their cars to pick-up their children. Park in the front parking lot and enter the main office where your student will be called for. This will be communicated to all parents via text utilizing the "remind" App.
2. Students riding private door to door van services will be escorted by designated school personnel to the waiting van, weather permitting.
3. When the weather subsides, classes will be walked to their designated dismissal area and students will be placed in their cars.
4. All students going to After-School Care will be picked up by an activity leader and remain in the cafeteria until the weather subsides.

### **PARKING AND TRAFFIC REGULATIONS RULES**

- Speed limit on school grounds is five (5) miles per hour.
- Please obey the traffic signs on the property.
- **There is no parking permitted in the drop-off and pick-up lane.**
- Pedestrians have the right of way, please stop at the crosswalk.
- While you are in the drop off and pick up lane, please abide by the following rules:
  1. Do not exit your vehicle.
  2. **Do not allow your child to exit the car on the passenger side of the car because your child will be exiting on to through traffic. Arrange for any car seats or cargo to be behind the passenger seat so the child is sitting behind the driver.**

#### **Multiple**

- children should all exit through the driver's side door.**
- 3. **Do not place your child's belongings in the trunk of your car because this will require that the child retrieve his belongings from the trunk and place him/her between two running cars.**

## **SAFETY PATROLS**

Our safety patrols are students from our 5<sup>th</sup> grade class. Our patrols are there to assist you and your child in the arrival and dismissal process. The patrols are there to enforce the policies designed by the administration. If you have a concern with a school policy, please do not discuss it with the patrols. Please take all concerns to the patrol supervisor, Mr. Loy.

## **ATTENDANCE**

**Attendance and punctuality is mandatory.** It is an educational fact that attendance and grades are connected. There are probably no factors more important to successful school progress than regular and punctual school attendance. Students who are tardy or absent excessively from the instructional program will fall behind in academic achievement. **Excessive school absenteeism precedes grade failure, loss of interest, and may result in students withdrawing from school. We expect our students to demonstrate excellent attendance. Please make every effort to have your child attend school on time consistently.**

**School Attendance:** Students are to be counted in attendance only if they are actually present for at least **two** hours of the day or engaged in a school-approved educational activity which constitutes a part of the instructional program for the student.

**Class Attendance:** Students are to be counted in attendance if they are physically present in class for at least half of the class period, have been excused by the teacher on a class-related assignment, or have been requested by a member of the school support staff for an approved school activity.

- 1. Students missing five or more consecutive days of school due to illness or injury are required a written statement from a health care provider.**
2. The written statement must include all the days the student has been absent.
3. If a student is continually sick and repeatedly absent from school due to a specific medical condition he/she must be under the supervision of a health provider.
4. Failure to provide required documentation within three school days upon the return to school **will result in unexcused tardies or absences.**
5. Students who have habitually unexcused absences shall be considered truant. Students affected by the Compulsory School Attendance Law may be referred to Children and Family Services for truancy.
6. Any student arriving after 8:30 AM will be issued a late pass and marked tardy. **After ten (10) unexcused tardies, the student will be issued a referral form that will be placed in the student's permanent record along with appropriate progressive discipline.** We understand that emergencies may arise. In such cases, we will need a letter signed a parent/guardian explaining the reason for being tardy.
7. Parents are to contact the office if their child is going to be absent. On the day he/she

returns to school, parents must send a handwritten note explaining the reason for their child's absence. A maximum of 10 handwritten notes will be accepted per school year. After 10, a referral will be issued. Students may not exceed more than 10 unexcused absences per school year. For every five unexcused absences, the student will receive a referral.

8. Make-up work and homework must be completed within 24 hours (per missed day) after returning to school. All assignments must be made-up or the student will be issued an incomplete. Incomplete assignments may affect the student's final grade. **It is the parent's responsibility to contact the teacher regarding any missed assignments.** If a student anticipates being absent for more than two consecutive days, it is the parent's responsibility to contact the school and pick-up any class work/homework from the teacher.

### **Excused Absences**

- A. Personal illness of the student (medical evidence may be required by the principal or designee for absences exceeding **three** consecutive days). The written statement must include all days the student has been absent from school. If a student is continually sick and repeatedly absent from school due to a specific medical condition, the student must be under the supervision of a health care provider in order to receive excused absences from school.
- B. Medical Appointment: If a student is absent from school due to a medical appointment a written statement from a health care provider indicating the date and time of the appointment must be submitted to the Principal. (PLEASE MAKE EVERY EFFORT TO SCHEDULE MEDICAL APPOINTMENTS OUTSIDE OF SCHOOL HOURS OR ON NON-SCHOOL DAYS).
- C. Death in immediate family.
- D. An approved school activity (absences recorded but not reported).
- E. Other absences with prior approval of the Principal.
- F. Attendance at a center under Department of Children and Families supervision.
- G. Significant community events with prior permission of the Principal. When more than one school is involved, the Region Superintendent will determine the status of the absence.
- H. Observance of a religious holiday or service when it is mandated for all members of a faith that such a holiday or service is observed. The religious holiday must be listed on the district's approved list of religious holidays.

### **Tardiness**

A student is considered tardy if they are not present at the moment the school bell rings for the class assigned. NOTE: If a student is not present when attendance is taken but is present later in the school day, that student must be considered in attendance, but tardy, and the absence should be changed. A student who is tardy should never remain on record as being absent.

***A student who has twenty (20) or more cumulative tardies will not be allowed to participate in interscholastic competitions or performances for the remainder of the school year.***

## **Early Sign-outs**

No student shall be released within the final thirty (30) minutes of the school day unless authorized by the Principal or principal's designee (i.e., emergency, sickness).

No student shall be permitted to leave school prior to dismissal at the request of, or in the company of anyone other than a school employee, a police officer with judicial authority, a court official, or the parents of the student unless the permission of the parent is provided. No parent may have access to the student or may grant permission to allow the student to leave school prior to dismissal if there is a legally binding instrument or court order governing such matters as divorce, separation, or custody which provides to the contrary. The parent who is the primary residential custodian or the parent who enrolled the student shall determine in writing, if the student may be released to individuals unless otherwise stated in a court order.

**Emergency Contact Card must include those individuals who a parent/legal guardian permits the child to leave school grounds with on any day at any time.**

## **BIRTHDAYS**

Parents might want to recognize their child's birthday in school. If you wish to provide a small party for your child's class, please make arrangements with your child's teacher. If you would like to bring in cupcakes, please arrange it with your child's teacher as well. **We cannot have lunch parties or send food items to be given during lunch times. We ask that you not bring cake to school. Cupcakes or Cookies (Store bought only) are acceptable.**

**NO PEANUTS OR ITEMS CONTAINING NUTS ARE ACCEPTED OR ALLOWED FOR ANY ACTIVITY AT SCHOOL.**

## **BOOK BAGS**

It is recommended that each student have a book bag to transport his/her books and materials between school and home. We encourage parent(s) to check their child's book bag often to ensure necessary school materials, assignments, and communication notes are seen and returned to school. School supplies should be replenished as needed. **\*\*New This Year: Middle school students MUST purchase the approved clear backpacks through Ibiley uniforms.**

## **LUNCH BAGS/BOXES**

Students who bring lunch bags or boxes from home must bring it upon beginning of the school day. For the safety and security of all of our students, family members are not allowed to bring outside foods to the cafeteria. Should an emergency occur, parent/legal guardian is to leave the lunch bag/box with security personnel in the main entrance of the school.

## **COMMUNICATION**

**Parent to School Communication**

A prime factor in our operation is the importance we place upon communication between home and school. The lines of communication must be kept open at all times so that we may be properly tuned into your child's needs.

**Please notify us immediately if:**

1. Your child has developed a communicable disease.
2. You will be out of town.
3. Your telephone number and/or email address (home and/or work) has changed.
4. You wish to change or add to the emergency contact numbers we are to use.

**Parent to Teacher Communication**

Conferences with individual teachers must be arranged by contacting the teacher via email. Teachers may also be available during their breaks; however you must make an appointment for these times. Parent conferences are not to be held while other families are able to hear information for other students as all student information is private and we respect each of their individual abilities. **Moreover, please do not engage in parent/teacher conferences during arrival or dismissal times as the primary goal for all school staff is to maintain the safety of all students at all times.**

*Always attempt to resolve issues/conflicts with the teacher(s) before communicating to the administration. Most issues can be resolved when you have open and honest communication with your child's teacher.*

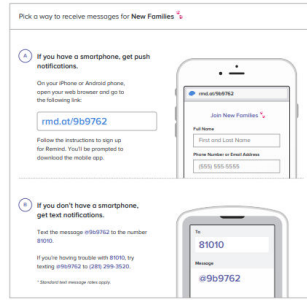
Order of contact to resolve an issue is:

**Teacher → Assistant Principal → Principal**

**School to Parents Communication**

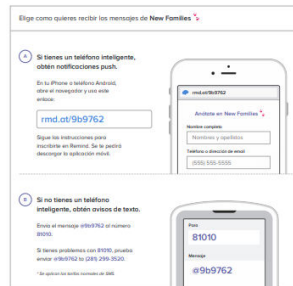
1. WWW.BRIDGEPREPPALMBEACH.COM in which home learning, calendar and all communication is posted.
2. [WWW.PALMBEACHSCHOOLS.ORG](http://WWW.PALMBEACHSCHOOLS.ORG), is the Palm Beach County Public Schools website.
3. Emails and notifications will be sent home periodically informing you of upcoming activities or deadlines.
4. Facebook Page: @BridgePrepAcademyofPalmBeach and also @BridgePrep Academy Palm Beach bulldogs in Action.
5. Text via "Remind" App. Download the free "Remind" app from the App store or Google Play Store and follow the directions below.

Get information for Bridge Prep Academy right on your phone—not on handouts.



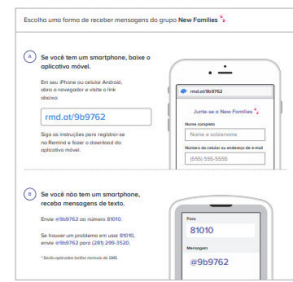
Don't have a mobile phone? Go to [rmd.ct/9b9762](https://rmd.ct/9b9762) on a desktop computer to sign up for email notifications.

Obtén información sobre Bridge Prep Academy directamente en tu celular, no en impresos.



¿No tienes un teléfono celular? Ve a [rmd.ct/9b9762](https://rmd.ct/9b9762) en una computadora para inscribirte para recibir mensajes por correo electrónico.

Receba notificações do grupo Bridge Prep Academy diretamente no seu celular.



Não tem um celular? Acesse [rmd.ct/9b9762](https://rmd.ct/9b9762) em um computador e inscreva-se por e-mail.

## SCHOOL EMERGENCIES

### Emergency Protocol: 2018– 2019

When, and if, an incident or any kind of threat or crisis occurs, the following procedure must be implemented for the safety and security of all students.

1. Staff member will alert the office.
2. Office staff will make necessary phone calls; 911, alert the administrative team, call security, and make an announcement:
  - Code Red** – Danger in the building
  - Code Yellow** – Danger in the community
  - Code Black** – Tornado or natural disaster
3. All teachers will look outside their doors; pull in any children in from the hallway, or nearby bathrooms. Lock their doors and shut their windows.
4. The administrative team, security, and all special area teachers available will walk the campus in search of any stray children.
5. Security will alert the PE teacher immediately.
6. PE teacher will escort his/her class to the closest classroom.
7. Support Personnel, ESE, and Spanish teachers will report to the office to assist as necessary.
8. Cafeteria staff will secure the lunch area.
9. Custodians will lock and secure all doors to the building.
10. Everyone remains in emergency mode until alerted by the office.
11. An “All Clear” announcement will be made when the emergency has passed.
12. In the event of a tornado threat, the Code Black will be announced, please follow procedure for tornados.



13. In “lockdown” situations, the police department becomes in charge of the buildings. Families will be notified of situations once the authorities have approved for the school to do so.
14. In an effort to alleviate chaos or stress, teachers will remain calm and keep teaching in a normal manner. We need to maintain a quiet and safe environment for all of our students.

### **Accidents/Illnesses**

Parents will be notified immediately in case of illness or an accident. In the event that a parent cannot be located, the person(s) named on the emergency contact cards will be contacted. **It is the parent’s responsibility to make sure that these numbers are current and accurate.** Please notify the office immediately of any accident or injury which occurred during arrival or departure from school.

Children who are ill should remain at home to minimize the risk of passing the illness onto others. Please notify us of any contagious illness your child has so we may alert other parents. In addition, please notify the school of any chronic condition your child may have.

**Fire Drills** – We practice monthly fire drills to familiarize the students with emergency procedures in case of a real fire. These drills are practiced all different times on various days throughout the school year.

**Intruders** – We pay extreme attention to making sure our school gates are locked at all times, and our staff keeps a watchful eye out for strangers around our property.

**Family Crisis** – If there is a family crisis, please call the office immediately. We will do all we can to help with the situation, including keeping your child until you can pick up.

**Weather Emergency** – In case of a hurricane, please follow the instructions for Palm Beach County School District for closing and reopening of BridgePrep Academy.

**National Emergency** – If there is a national emergency, or if there is a threat to our building or children, our staff will respond with our emergency plan. Your child will stay in his/her classroom with his/her teacher. The teacher will attempt to keep the classroom climate as stable as possible. We have an intercom system in every room. Please check the school’s telephone message and website for updates. We will keep you posted as to what procedure to follow. You will be contacted as soon as possible. Your child is our primary concern.

*We, fully, understand the sensitiveness to such circumstances and do what is needed first to secure our students safety. Once all has been completed, communication will be provided to our school community.*

## **EMERGENCY CONTACT INFORMATION**

It is very important for us to have the name and phone number of someone who can be responsible for your child, if we cannot reach you. This person should be able to come to school and pick up your child if necessary. Please be sure that the person you list has this understanding. **If at any time your personal information changes, please notify the office immediately. This can only be done by the parent/legal guardian that registered the student(s).**

## **INTERNET ETHICAL USE AT SCHOOL**

### **Internet Access During School Hours:**

1. Student users may not use the BridgePrep Academy's Computer Lab or Internet for any illegal activities. Students will not write messages that contain profanity, obscene comments, sexually explicit material, and/or expressions of bigotry, racism, or hate.
2. Student users are not to publish anything offensive using the BridgePrep Academy's Computer Lab or Internet.
3. If a student gains access to any service via the Internet which has a cost involved, the student and his/her parents, will be responsible for those costs.
4. Students should not reveal personal information, such as: name, address, or phone number.

### **Disciplinary Procedure:**

1. The minimum action that will occur in the case of a violation is an Administrator/student conference and parental notification.
2. Banned from access to the computer lab or BridgePrep Internet for an appropriate time period, depending on the severity of the offense, and on how many previous offenses have been committed.
  - a. Banned from using all computer equipment, or the Internet.
  - b. In-school or out-of-school suspension.

***\*It is the parent(s) responsibility to monitor their child/children's use of technology when students are not in school. Social media and internet based games give communication abilities that we suggest parents monitor frequently. Particular issues may arise through these forms of entertainment that do not involve our school.\****

## **FAMILY RIGHTS AND PRIVACY RIGHTS**

Parents have the right to inspect and review their child's educational records. All student records will remain confidential unless there is written consent from a parent to release them. In the event that there is a judicial order to relinquish records due to a court subpoena, parents will be notified. Parents must give the school office 24 hours advance notice in order to facilitate the child's record for the parent to review.

## **GROOMING**

### **Make-up**

1. Girls are not allowed to wear make-up.
2. Nail length must be school appropriate length.

### **Hair**

1. A student is not permitted to come to school with colored or dyed hair.
2. Boys must have neat and clean hair.

**The school reserves the right to restrict the wearing of any hair style that the school feels is inappropriate to the school setting and is a distraction to the learning environment.**

### **Jewelry**

1. All students are allowed to wear a watch, a small bracelet and a neck chain.
2. No plastic or rubber wrist bands are permitted.
3. Students are allowed to wear small post style earrings, no dangling earrings, extra piercing or extra earrings are allowed.
4. Tattoos are not permitted.
5. Chains that hang from the pockets and belt loops are not acceptable.
6. If a student wears excessive jewelry the student will be ask to remove the jewelry. The jewelry will be kept in the office until a parent or designee of parent comes to the office to collect the jewelry.

**The school will not be responsible for lost or stolen jewelry. The school reserves the right to restrict the wearing of any jewelry the school feels is inappropriate to the school or to the student.**

## **UNIFORMS**

**All students must wear school uniforms.**

1. All uniform polos must be of the proper colors with our school's logo on the left hand

side of the shirt.

2. All uniform shirts must be tucked in and not worn in a “baggy” fashion. Pants have to be worn at the waist.
3. All pants that have belt loops must be worn with a belt. A belt that is long and hangs from the waist is not acceptable.
4. Skirts or polo dresses must be of a modest length. A modest length means that, if a student kneels, the skirt or polo dress must be no more than two inches above the floor.
5. Winter jackets must be a school approved sweater/jacket or a plain navy blue sweater/jacket or fleece, with no graphics.
6. Sneakers/Shoes should match school colors (navy-blue, white and/or black) Shoes may have laces or Velcro; socks are mandatory.
7. Students in grades 6-8 are required to have a clear plastic bookbag. Only the designated bookbags from Ibiley uniforms are acceptable.

**If a student is not in the required school uniform, the student will be sent to the office. In the office, the parents/guardians will be called and asked to bring the required uniform to school. Students will not be permitted to class without the uniform. A student will receive a uniform violation form.**

#### **Uniform Referral**

- After 3 uniform violations, a referral will be issued.

#### **Uniform Purchase**

Visit Ibiley Uniform Store to purchase your BridgePrep Academy uniforms. All polos must be purchased through Ibiley Uniforms. Uniforms packages are available; you can purchase it in person at the Ibiley Uniforms and More stores located throughout Florida, or purchase your uniforms online at [www.ibileyuniforms.com](http://www.ibileyuniforms.com) and search for BridgePrep and locate our campus.

#### **GRADES**

Instructional staff uses evaluative devices and techniques as needed to report individual achievement in relation to school goals, acceptance norms, and student potential. Student grades, unsatisfactory work notices, parent reports on state assessment, and/or standardized testing, parent conferences, and adult/student conferences should serve as the primary means of communicating student progress and achievement of the standards for promotion.

A student’s academic grade reflects the teacher’s most objective assessment of the student’s academic achievement. Students have the right to receive a conduct and an effort grade consistent with their overall behavior and effort.

Specific guidelines for grading student performance and for reporting student progress are provided below and detailed in the *Student Progression Plan*. To view the plan, go to <https://www.palmbeachschools.org/studentprogression/>

## **Academic Grades**

Academic grades are to reflect the student's academic progress. The grade must provide for both students and parents a clear indication of each student's academic performance as compared with norms that would be appropriate for the grade or subject.

The following is a list of links providing specific details regarding grading.

[Elem Report Card Parent Letter-English](#)

[Elem Report Card Parent Letter-Spanish](#)

[Elem Report Card Parent Letter-Portuguese](#)

[Elem Grading FAQ-English](#)

[Elem Grading FAQ-Spanish](#)

[Elem Grading FAQ-Portuguese](#)

[Elem Trimester, Progress Report, and Report Card Dates](#)

The following rules, regulations and due process procedures are designed to protect all members of the educational community in the exercise of their rights and responsibilities.

These rules apply to any student:

1. Who is on the school property.
2. Who is in attendance at school or any school-sponsored activity.
3. Whose conduct at any time or in any place has a direct and immediate effect on maintaining order and discipline in the school.

## **CODE OF EXCELLENCE**

We believe that a safe and orderly school is of primary importance. When children behave in a respectful, responsible, and safe manner, they learn more and develop into responsible children whose "character counts". The BridgePrep Academy Code of Excellence is a school wide plan, which clearly outlines student expectations.

Proper behavior is recognized and consequences are given for breaking our code. Each parent must take an active role in supporting this plan. We want our children to learn and to be responsible citizens. It is in the children's best interest that parents and staff work together to ensure a happy, safe, and productive learning experience. The Positive Behavioral Support (PBS) program we implement allows for students who have earned Bulldog Bucks to receive a reward for displaying positive behaviors during school days.

### **Students' Code of Excellence**

- Be honest
- Be kind
- Be respectful
- Be patient

- Be proud
- Be courteous
- Be prompt
- Be prepared
- Be polite

## **STUDENT CONDUCT**

The Code of Student Conduct delineates the behavior expected from students.

1. Students who commit violations of the Code of Student Conduct may be subject to suspension.
2. Based on the severity of the violation, students may additionally be recommended for administrative placement to an opportunity school, or expulsion.
3. For detailed information on the Code of Student Conduct please review it at [Elem & Middle Student Code of Conduct](#)

### **Proper Language**

BridgePrep Academy strives for a higher standard of behavior. We do not permit cursing or name calling in school. Students who speak inappropriately to another student or staff member will not be permitted to return to class until a parent/administrator conference is held.

### **Fighting**

1. We use words to get our point or opinions across to other people.
2. BridgePrep Academy has a zero tolerance for aggression; in the event that a student is involved in a physical altercation, the student will be send to the office and the parents will be called. At this time, disciplinary measures will be discussed.

## **HARASSMENT/BULLYING**

Bullying is unwanted, aggressive behavior among school aged children that involves a real or perceived power imbalance. The behavior is repeated, or has the potential to be repeated, over time. Bullying includes actions such as making threats, spreading rumors, attacking someone physically or verbally, and excluding someone from a group on purpose. This definition includes cyber bullying. BridgePrep Academy has a zero tolerance for bullying in any form. A student who bullies another student or staff member will not be permitted to return to class until a parent/administrator conference is held. At this time disciplinary measures will be discussed.

1. This policy ensures that all individuals will enjoy a safe environment free from unreasonable interference, intimidation, hostility, or offensive behavior on the part of school personnel, students, parents or visitors to the school.

2. BridgePrep Academy acknowledges that harassment, sexual or otherwise, is against the law and will not be tolerated.
3. The term "harassment" includes, but is not limited to, slurs, jokes, and other verbal, graphic or physical conduct relating to an individual's race, color, sex (including same-sex), religion, national origin, citizenship, age or disability.
4. Bullying is considered to be harassment. Bullying includes, but is not limited to; unwanted name calling, teasing or physically touching a person.
5. Harassment and bullying can be verbal, physical or through the use of technology.

## **Sanctions**

**The Administration will apply any of the following sanctions to deal with unreasonable conduct.**

1. Counseling with the offender(s).
2. Probation, with a warning of suspension or recommendation for expulsion for continuing or recurring offenses.

**Acts of disorderly conduct may include, but are not limited to the following:**

- Classroom tardiness
- Dishonesty
- Acting in a manner that interferes with the education process
- Abusive language between or among students
- Failure to complete assignments or carry out instructions

**Possible Sanctions:**

- Verbal and Written Reprimand/ Referral/ Student Case Management Form (SCAM)
- Contact with parent
- Loss of privileges
- Detention/s
- In-school/Outdoor suspension

## **GLOSSARY**

**Administrative Detention:** a corrective strategy wherein a student must spend time in the school office (time to be determined by the administrator).

**Consequences:** a result of one's actions.

**Discipline:** a set of rules that develops self-control and orderliness in students by providing logical consequences for both appropriate and inappropriate behavior; the goal being a safe and orderly environment for all students.

**Disrespect:** to be rude or discourteous to another person.

**Expulsion:** a corrective strategy that means your child is no longer able to attend your current school.

**Referral:** Students may be issued referrals for tardies, absences, uniforms and/or severe disruptive behavior. Written warning given to students who have violated the code of conduct or school rule.

**Respect:** to be courteous to those around you, to show consideration

**School Suspension:** a corrective response to serious behavior to avoid where the student is not permitted to attend school from one to ten days.

**Teacher Detention:** a corrective strategy where in a student must spend time in school detained by the teacher (time to be determined by the teacher).

**Classroom Consequences:**

- 1<sup>st</sup> consequence: Verbal Warning
- 2<sup>nd</sup> consequence: Detention/ Loss of privilege
- 3<sup>rd</sup> consequence: Parent contacted/ Referral note sent home

**Administrative Consequences:**

- 4<sup>th</sup> consequence: parent is called, and Administrative Detention is given.
- 5<sup>th</sup> consequence: In School Suspension (ISS)/ Referral completed

**Severe Clause:** extremely disruptive behavior(s) (fighting, profanity, disrespect, sexually explicit behavior, destruction of property) results in immediate removal from class. Disruptive behavior will result in issuing a referral and an administrative review for possible immediate suspension from school (OSS). Parent will be called to pick up student from school.

BridgePrep Academy students are expected to show respect for themselves, for other students, and for their teachers. Students are expected to behave in ways that are acceptable to classmates and conducive to learning.

Misbehavior on the part of students can be generally corrected when home and school work together. Teachers and students must foster a mutual respect for one another. Teachers will never use corporal punishment or offensive language toward a student. According to the Code



of Student Conduct, methods of positive reinforcement/rewards and/or loss of privileges are utilized.

## HEALTH GUIDELINES

If your child is injured or becomes ill at school, you will be notified immediately. PLEASE KEEP US CURRENT REGARDING YOUR PHONE NUMBERS BOTH AT HOME AND WORK. This information is vital should an emergency arise.

### ILLNESS

1. If you suspect that your child is not well, please keep him/her at home, regardless of his/her desire to come to school. We ask that you do this out of consideration for his/her classmates.
2. If your child has had a fever, his/her temperature should be normal for twenty-four (24) hours before returning to school.
3. If your child has a cold, is coughing, and has a runny nose, please consider that he/she may be contagious to others. Please keep him/her home or make arrangements for his/her care until he/she recovers.
4. If your child has a rash, please keep him/her home and contact your doctor to find out the cause.
5. Our school staff only administers prescription medication prescribed by a doctor to children upon completion of a medication request form.

### Medication Policy

Every attempt must be made by the student's parent and physician to have medications administered at home during non-school hours. When this is not possible, a completed **Medication Authorization Form** must be provided for **each** medication to be administered during school hours.

No medication may be administered by school personnel unless the parent presents the school with a completed **Medication Authorization Form**, signed by the physician and parent.

The **Medication Authorization Form** must be **renewed each school year** and placed in the student's cumulative folder.

Any changes in the type, dosage or frequency of medication administered will require a new Medication Authorization Form to be completed.

The Medication Authorization Form must be current. The Medication Authorization Form will be filed in the student's Cumulative Health Record (*HRS-H Form 3041*).

In an emergency situation a **Medication Authorization Form** can be faxed to the physician and returned by fax to the school. A copy should be made of the form, as fax copies fade. An original must be obtained from the physician and include parent/guardian signatures within 24 hours in order to continue administering the medication.

### **Administering Medications**

State rule FL Statute, 1006.062 Administrative Rule, 64F-6.004 states that school personnel may assist students in the administration and/or dispensing of prescribed medication in compliance with the following procedures:

All medications will be administered by the school principal or his/her designee.

Medications may be administered by the school principal or his/her designee when there exists an illness or disability that requires maintenance-type medication and when failure to take prescribed medication could jeopardize the student's health and when the medication administration schedule cannot be accommodated before or after school.

If the parent/guardian has completed the Medication Authorization Form correctly and has met the requirements of the District, it is the obligation of the school to see that the student is medicated at the appropriate time indicated on the Medication Authorization Form.

Only the parent/guardian should deliver medications and pick up unused medications.

**\*Guidelines for administering medication will be followed very strictly.**

There are several illnesses that are common occurrences in school-age children. Children will not be admitted to school and will be sent home if they exhibit any symptoms of illness. Please help us control and minimize the spread of infections to others by providing care for your child when he/she is sick and keeping them at home while doing so.

### **HOME LEARNING**

Home Learning Assignments are a very important part of learning since they reinforce concepts that have been learned. BridgePrep Academy's policy is to assign homework EVERY night. This keeps the academic flow and a means of involving parents aligned with our curriculum goals.

#### **Parents' responsibility for completing home learning assignments:**

1. Provide your child with a quiet place which is conducive to studying and to learning.
2. Show an interest in your child's home learning assignments by providing assistance and reviewing completed work.
3. Do not complete the home learning assignments for your child. If your child is having difficulty, try to help them with their assignment and notify the teacher.
4. Read with or to your children daily.

### Student responsibilities for completing home learning assignments:

1. Students are responsible for recording and completing all Home Learning Assignments independently. Parents may provide assistance, but students must complete the work on their own.
2. Home Learning Assignments should be done in a quiet place with good lighting and minimal disturbances.
3. If there is a problem in understanding how to complete Home Learning Assignments, students are to do the very best job possible. If a student does not understand the assignment(s), they are encouraged to bring it in the next day and ask the teacher for assistance. In this case, the homework should be completed that evening along with the regular Home Learning Assignments.
4. If a student is having difficulty in managing their time for homework, ask the teacher for assistance with homework time management.

Grade Level	Frequency of Assignments	Total Daily Average (All Subjects)
K – 1 <sup>st</sup> grade	Daily (5 days per week)	45 minutes
2 <sup>nd</sup> – 3 <sup>rd</sup> grade	Daily (5 days per week)	60 minutes
4 <sup>th</sup> – 8 <sup>th</sup> grade	Daily (5 days per week)	75 minutes
All Grades	Daily (5 days per week)	Reading for 30 minutes <b><u>in addition</u></b> to above time.

### GO GREEN

BridgePrep Academy will make an effort to Go Green this academic year. We have a student recycling program in the school and we will attempt to send home less hard copies of letters and flyers. In order to promote our Go Green School, we will be utilizing more mass emails, telephone messaging and text messages, our school website, Facebook, and school app. Therefore check your emails and text messages daily to receive the latest updates and news from BridgePrep Academy.

### LOST AND FOUND

A lost and found area will be designated in the main office. To minimize the quantity of lost and found articles, we ask that you please write your child's name on everything he/she brings to school.

### LUNCH (PLEASE MAKE EDITS TO THIS SECTION AS THEY APPLY TO YOUR CAMPUS)

1. It is required that all students eat a healthy and nutritious lunch.

2. A student may bring their lunch to school or purchase lunch from our vendor. School lunches are \$2.75 per lunch. Parents are to use our Point of Service system and prepay their child's lunch. If your child qualifies for free or reduced lunch arrangements will be made accordingly.
3. Students who bring lunch bags/boxes must bring them upon arriving to school. **NO NUT ITEMS PERMITTED FOR ANY STUDENT.**

### **CAFETERIA RULES**

1. Students are to enter the cafeteria quietly.
2. Once seated, students need permission to leave their seats.
3. Food trading is not permissible.
4. Students are responsible for all items on their trays. Food is not to be thrown. It must either be eaten or discarded properly along with trash items.
5. Students are responsible for leaving their area, including the floor, free of trash.
6. Students should engage in quiet conversation only. There is to be no yelling or shouting.

### **MEDIA COVERAGE**

During the course of the year it is possible that your child will have his/her picture taken or videotaped. These pictures may be taken at class parties, birthdays, field trips, the school program, or other special events. These pictures may be used for promotion, in the local paper, on the website or in the yearbook. Please sign the picture/media release form so we can use your child's picture for these publications or events. If you do not desire to have your child's picture used for these publications, please write that on the picture/media release form.

### **PAVE HOURS (Parents Active in Volunteering in Education)**

#### **PARENT ACTIVITIES**

The goal of our school is make every child's potential a reality through a strong collaboration of parent/teacher/community partners. The goal of our school is to bring into closer relation the home and the school; so, that parents and teachers may cooperate intelligently in the education of children and youth. We urge all parents to actively participate in all school activities, together we make a difference, together our children will grow stronger and self-reliant. Join BIA (Bulldogs in Action) to be up to date on school events and activities.

### **Volunteers Information**

#### **Volunteer Requirements, Options, and Guidelines**

1. At BridgePrep Academy, each family is encouraged **to complete 20 volunteer hours prior to the last day of the school year.** Students enrolled at Bridgeprep Academy

Charter School remain active with Palm Beach County School District and retain entitlement to all applicable policies.

2. Due to mandates from Palm Beach County Public Schools, all parents wishing to volunteer must participate in the *School Volunteer Registration Program* and must be cleared through Palm Beach County Public Schools before permission to volunteer is granted. **This mandate includes clearance for volunteers in school events such as book fairs, fundraising activities, etc.**
3. **Parents must also be cleared to chaperone on any fieldtrip(s).**
4. It is the responsibility of the parent to communicate with their child's teacher to complete the hours required by BridgePrep Academy.

### **Earning PAVE Hours**

1. Parents will receive a PAVE Book to record their family volunteer hours. It is the parent's responsibility to track, record and acquired authorized signature for their hours.
2. Parents may complete hours by any of the following:
  - Assist the teacher
  - Be a guest speaker
  - Chaperone field trips
  - Virtual opportunities
  - Participate in BIA- Bulldogs in Action
  - Tell/read stories
  - Make educational games
  - Donate items on the teacher's wish lists

Any parent/guardian who would like to volunteer in the classroom must inform the classroom teacher **prior** to volunteering. Approval from the administration must be confirmed before parents will be allowed to enter any classroom(s).

### **PERSONAL BELONGINGS**

Please do not allow your child to bring to school any personal belongings; this includes toys, electronic equipment or the latest fads. However, on their specific Show-and-Tell day, as designated by your child's teacher, your child may bring to school one item. Please understand that the school cannot be responsible for lost or stolen items. Also, please put your child's name on these items.

Please label all your child's belongings (lunch boxes, books, sweaters, etc.) with his/her name in permanent ink or marker to lessen the chances of items being lost.

Please do not send your child to school with expensive jewelry. The school will not be responsible for lost or stolen jewelry.

## PHYSICAL EDUCATION

1. Physical Education is a daily 30 minute class..
2. All students are required to participate in P.E, unless otherwise directed by a physician and communicated to the teacher(s).
3. Please ensure your child has comfortable sneakers daily to avoid injuries.

## PROHIBITED ITEMS IN SCHOOL

1. Students are not permitted to have any of the following objects in their possession.
2. If a student is found to have any of the items listed below, the item will be taken from the student. The item will be given to an administrator and a parent must come to the office to pick-up the item.
  - Cell phones,
  - Smart watches,
  - MP3 players or any entertainment equipment,
  - Electronic games,
  - Sharpies markers,
  - Candy or chewing gum.
- The School Board enforces the Florida Department of Education Zero Tolerance Policy on school violence, crime, and the use of weapons. As an approach to reducing school violence, the intent of the policy is to provide a safe school climate that is drug-free and protects student health, safety, and civil rights. This policy requires the school district to impose the most severe consequences provided for in the Code of Student Conduct in dealing with students who engage in violent criminal acts and or are found in possession of the following:
  - Knives or sharp objects
  - Guns
  - Mood altering drugs

## CELL PHONES

Cell phones **are not** permitted for student use unless the teacher(s) has requested for particular assignment. Students who need a cell phone to communicate with parent/legal guardian must have the phone turned OFF and in book bag throughout the instructional school days. In certain situations, the student will be allowed to inform the teacher and he/she will be sent to the main office to use the school phone in order to contact parent/legal guardian. Cell phones may not be kept in school lockers either. **Any cellular phones, electronic books or games are brought to the school are not the school's responsibility should they become lost or stolen.**

## **SECURITY**

Our school operates on a security minded approach. There will be a security monitor on our premises from 7:30 a.m. to 6:00 p.m. All visitors entering our building must check in the school office for approval to be in the building. Children traveling throughout the building must travel in twos. Any person who doesn't have any business to conduct in the school will not be allowed to remain on the premises.

**\*Please do not leave your other children unattended in your cars, when picking up or dropping off a BridgePrep Academy student. Also, please do not leave your purse, wallet or other valuables in your car when you come to pick up or drop off your child. The school cannot be responsible for lost, stolen or damaged items.**

## **TELEPHONE CALLS**

Students will not be permitted to make personal phone calls from the school office or personal cell phones.

## **TEXT BOOKS**

Students will be issued books at the beginning of each school year. Students must immediately inform teachers about any lost or damaged books so that they can be replaced. Parents will be responsible for the cost of the replacement book. The same rule applies for lost class library books.

## **TRANSPORTATION**

Transportation to and from school should be provided or arranged by the parent or guardian. BridgePrep Academy strongly believes in the daily communication opportunities created with your children while commuting to school.

## **VISITOR PASSES**

Any person needing to visit the school throughout the day, must report to the office and pick up a visitor's pass. Do not be offended, if you are asked to show identification. The safety of our students is our primary concern. If a parent must drop off a forgotten lunch box or homework assignment, please drop it off at the office and allow the office staff to deliver said item to your child. We are attempting to keep the learning environment as undisturbed as possible.

NOTE: Violations of parent contracts shall not result in the student's involuntary transfer, withdrawal, dismissal or forfeiture of current or future enrollment. The School shall not condition a student's enrollment on the parent signing any contracts that include any of the above-referenced conditions.

**BRIDGEPREP ACADEMY CHARTER SCHOOL  
PARENT/STUDENT AGREEMENT OF COMPLIANCE**

**PLEASE SIGN AND RETURN THIS FORM TO YOUR CHILD’S HOMEROOM TEACHER**

I have read on-line the BridgePrep Academy Parent/Student Handbook, including uniform policy and the Student Code of Conduct and agree to cooperate with all of the policies contained therein.

As a parent I understand the importance of the Student Code of Conduct, which can be accessed on the school website and is available in the school’s main office.

I agree to abide by all of the contents in the BridgePrep Academy Student/Parent Handbook and the Student Code of Conduct.

Name of Student: \_\_\_\_\_

Teacher: \_\_\_\_\_

Grade: \_\_\_\_\_

\_\_\_\_\_  
Signature of Parent/Guardian Date

\_\_\_\_\_  
Signature of Parent/Guardian Date

**\* You must fill out a compliance form for every child registered at BridgePrep Academy Charter School and submit it to each child’s homeroom teacher.**

NOTE: Violations of parent contracts shall not result in the student’s involuntary transfer, withdrawal, dismissal or forfeiture of current or future enrollment. The School shall not condition a student’s enrollment on the parent signing any contracts that include any of the above-referenced conditions.